

CUEWORD Prompters

- MULTIPLE FONTS
- HIGH RESOLUTION CHARACTERS
- ANY WINDOWS SUPPORTED LANGUAGE
- SUPER SMOOTH SCROLL
- PAL OR NTSC
- COMPUTERISED NEWSROOM COMPATIBILITY

CUEWORD offers a family of powerful digital Teleprompter systems designed for Television, Radio, Lectern and Teleconferencing environments.

Systems are available for use with both desktop and notebook PCs.

Operating under Windows CUEWORD offers what one has come to expect from today's advanced systems.

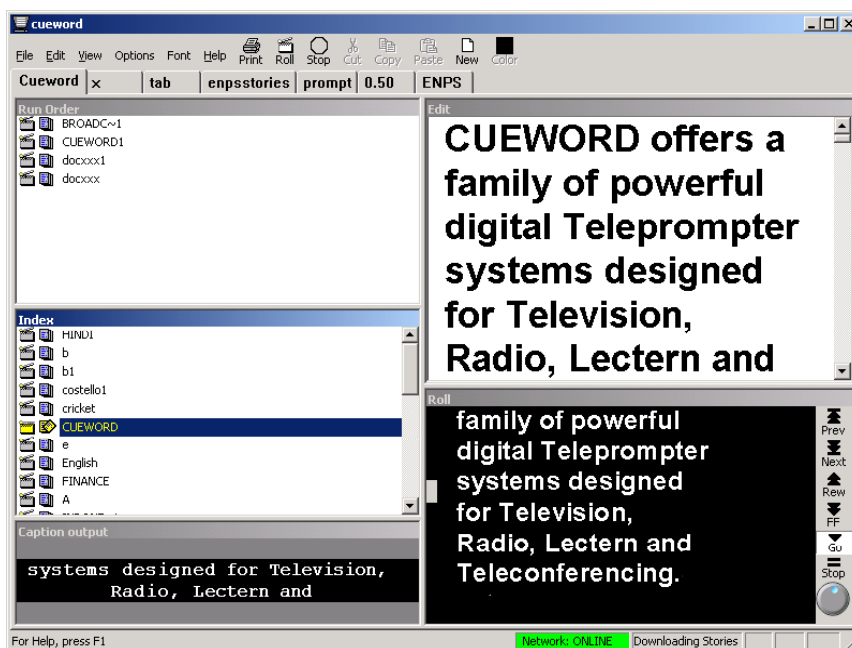
- Easy to use graphical user interface
- Support of any Windows Unicode true type or open type font for both printed and prompted text in any Windows supported language
- Eight different fonts available at any time – mix fonts and font sizes for added emphasis and impact
- Cut and Paste, Drag and Drop, both within CUEWORD and between CUEWORD and other applications
- Enhanced word processing features including unlimited undo/redo
- The edited text looks exactly as it would appear on the prompter display
- Index of stories available from any folder
- Change folders at any time to reload new material for prompting
- Full support for network folders
- On screen preview of prompted output
- Speed, forward/backward scroll, stop, fast forward, reverse, all supported by speed controller, mouse or keyboard
- Change story text and the run order even while stories are being rolled.
- MOS compliant support for major newsroom systems.



Software

The CUEWORD user interface is a single window divided into multiple panes.

- The **Index** is where new stories are built or imported to and where stories that are not part of the current run order are kept.
- Stories may be moved to the **Run Order** and sequenced to build up a show.
- New stories may be entered or existing ones changed in the **Editor**. All word processing functions applicable to prompting are provided. In addition, the left hand side of the editor is available for inserting any camera or other offline instructions.
- When stories are rolling the **Roll** frame displays the text exactly as it appears on the on camera monitor.
- The **Caption** window shows the closed caption currently being displayed.



Text can be **rolled** from almost anywhere. If a story in the Index is rolled then just that one story is rolled. If a story in the Run Order is rolled then that story and all following stories are rolled. If roll is initiated in the editor then text from the current cursor position is rolled.

Stories may be **moved** or **copied** from the run order or index to other folders. Stories may also be **imported** from other applications or other folders.

Folders may be marked as **refreshed**. Any changes made to a story in the folder by another user or another application is immediately incorporated into CUEWORD. This is particularly useful if the folder is on a **network**.

Full support for many **newsroom systems** is provided via MOS. The newsroom system integrates seamlessly into CUEWORD. Any change made within the newsroom system is immediately reflected in CUEWORD. Changes can include editing a story, adding or deleting a story and changing the order of stories within the rundown.

CUEWORD maintains a backup cache of network and newsroom folders and so is independent of any network failure.

CLOSED CAPTIONING

CUEWORD will optionally output an RS232 data stream that may be used by a closed caption inserter.

Display Systems

A Full range of On-Camera, Lectern and Teleconferencing display systems is available to suit any requirement. Shown below are some of the systems available.

The **OC-15** is the standard LCD display system for studio and production house use.

The mounting hardware is adjustable to accommodate various lens, camera and tripod combinations, with adaptor plates for both film and ENG, or the larger OB-type cameras.

The reduced size of the unit minimizes any mounting and operational problems with existing studio equipment. The reduced weight of the LCD display enables the unit to be mounted on lightweight tripods.

The CUEWORD beam-splitting mirror employs Titanium Dioxide thin film deposit techniques, giving a reflectance factor of approximately 27%.



The **OCL-10** display system, with similar specifications to the OC-15, is specifically designed for ENG and is particularly suitable for outdoor use.



The **PM-12** and **PM-15** transportable on-stage display system is ideal for conference situations. Two or three units may be placed around the stage. The presenter appears to be interacting with the audience.

The units are almost invisible to the audience. A lectern unit is also available with a built in monitor, microphone and light.

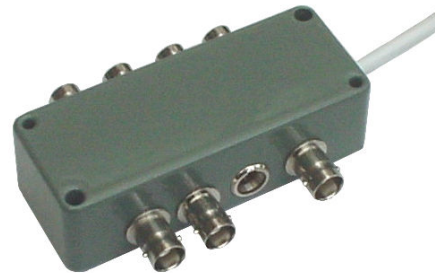
Teleconferencing display systems can be built to order to cater for a wide range of camera, monitor and furniture situations.

Hardware

The **QW-9000** is the standard speed controller for all computer systems.

A built in VDA supplies up to 8 composite 1 volt p/p 75 ohm video output feeds. Four of these outputs may be reversed horizontally or vertically to cater for displays without inbuilt reversing.

Communication with the computer system is via an industry standard USB port. An optional second speed controller is available to allow operation remote from the computer system.



Accessories.

FS-03 Speed control foot switch
FC-02 Variable speed foot controller
SC-02 Remote speed controller for QW-9000 system.



Minimum Computer System Requirements

- Pentium 400 MHz or above.
- Windows 2000 or above
- 32 MB memory
- 5 Meg free disk space
- 1 spare USB port

Distributed by:

Manufactured by:
CUEWORD Pty Limited
69 Hansens Road,
Minto Heights 2566
Australia

Phone: +61 2 9603 9318
Fax: +61 2 9820 3784
Email: sales@cueword.com.au
WWW: www.cueword.com.au